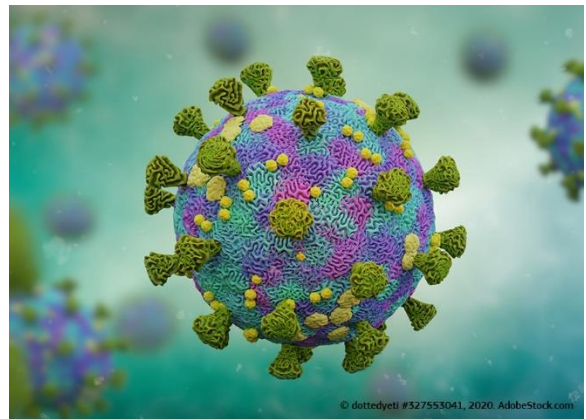


New IMI research projects on Coronavirus (May 2020)

Outcome of IMI fast-track call for coronavirus outbreak: 8 new projects

On 3 March 2020, the Innovative Medicines Initiative (IMI) supported through the European Commission's Horizon 2020 Framework Programme for Research and Innovation, [launched a special fast-track call](#) for the "[Development of therapeutics and diagnostics combatting coronavirus infections](#)" with an EU contribution of €45 million, which was subsequently increased to €72 million.

As part of the IMI public-private partnership, the pharmaceutical industry, IMI Associated Partners and other organisations will contribute an additional €45 million, bringing the total funding to €117 million.



On 12 May 2020, following the independent evaluation of proposals, it was announced that 8 projects were short-listed for funding. These projects involve researchers from 94 organisations across Europe, including universities, research organisations, companies, and public bodies. Small and medium-sized enterprises (SMEs) are particularly well represented in the successful proposals, accounting for over 20 % of the participants and 17 % of the budget. The projects form part of the [European Commission's wider response to the coronavirus outbreak](#).

Of the eight projects, five focus on diagnostics and three on treatments.

- **Diagnostic tests:** the 5 projects on diagnostics aim to develop devices that can be used anywhere and will deliver results very quickly, enabling front-line health workers to make the diagnosis more quickly and more accurately, which will in turn reduce the risk of further spread of the virus.
- **New treatments:** the 3 projects on therapies address primarily the current COVID-19 outbreak, but also foresee efforts to prepare for future coronavirus outbreaks.

The projects are listed below.

Disclaimer: For each project, funding and composition of the consortium is subject to finalisation and signature of the IMI Grant Agreement.

[For more information on EC support for coronavirus-related research.](#)

8 research projects on coronavirus short-listed for funding through IMI (May 2020)

Acronym/Title	Description	Lead institution	Partners
DIAGNOSTICS – Total EU contribution : € 28 million* – Total investment : €35 million*			
COVID-RED COVID-19 infections: remote early detection	To combine expertise in clinical epidemiology with digital devices (such as wearables and mobile apps) to rapidly and reliably detect cases, so that patients can be prioritised for testing.	Universitair Medisch Centrum Utrecht (NL)	9 partners from CH, DK, LT, NL, UK
DECISION A miniaturised disposable molecular diagnostics platform for combatting coronavirus infections	To develop a low-cost, miniaturised, disposable molecular diagnostic system that will make it possible to test patients with laboratory quality performance almost anywhere in 15 minutes or less.	GNA Biosolutions (DE)	4 partners from: DE, ES, IT
DRAGON Rapid and secure AI imaging based diagnosis, stratification, follow-up, and preparedness for coronavirus pandemics	To apply artificial intelligence and machine learning to deliver a decision support system for improved and more rapid diagnosis and prognosis. Citizens and patients will be involved in the development of the system.	Oncoradiomics (BE)	21 partners from: BE, CH, CN, IT, NL, UK
KRONO Evaluation of a production ready portable, point-of-need platform, direct from nasal swab test for the molecular diagnostic detection of COVID-19 infection	To deliver a simple test that can be used at a doctor's office or a patient's home and would deliver results in just 40 minutes. In addition, the project should demonstrate a pipeline for rapidly deploying new tests in response to future outbreaks.	BG Research (UK)	5 partners from: FR, IT, UK
RAPID-COVID Robust automation and point of care identification of COVID	To develop a diagnostic test that can simultaneously detect SARS-CoV-2, as well as 30 other common respiratory bacteria and viruses, to ensure patients are quickly isolated and that all patients receive the right treatment, while avoiding unnecessary use of antibiotics.	GeneFirst Limited (UK)	5 partners from: ES, FR, SK, UK

Acronym/Title	Description	Lead institution	Partners
TREATMENT – Total EU contribution : € 44 million* – Total investment: € 82 million*			
CARE Corona accelerated R&D in Europe	To identify candidates among existing drugs that could be effective as treatments (drug repurposing), and develop new drugs specially designed to tackle the SARS-CoV-2 virus, in order to deliver treatments for the current outbreak, as well as future coronavirus outbreaks.	Institut National de la Santé et de la Recherche Médicale - INSERM (FR)	36 partners from: BE, CH, CN, DE, DK, ES, FR, NL, PL, UK, US
Impentri Development of Impentri, an intravenous imatinib formulation for COVID-19 acute respiratory distress syndrome (ARDS)	To run a randomised, double-blind clinical trial to properly test the efficacy and safety of a generic drug - imatinib - as a treatment for COVID-19 patients with lung inflammation.	Exvastat (IE)	5 partners from: FR, IE, NL, Canada
MAD-CoV 2 Modern approaches for developing antivirals against SARS-CoV 2	To develop new COVID-19 treatments by engineering human tissue to test new antiviral treatments in the laboratory.	Statens Veterinärmedicinska Anstalt (SE)	9 partners from: AT, DE, ES, FR, SE, UK

* Approximate figures pending finalisation of grant agreements.